

Rabbit Polyclonal Antibody to DANRE foxh1

Order Information

Catalog#	P34231	
Size/Concentration	100µl	50µl
Price(¥)	1980	1180

Description

Transcriptional activator. Activates an activin response element (ARE). Recognizes and binds to the DNA sequence 5'-TGT[GT][GT]ATT-3'. Modulator of nodal signaling required for organizer formation. Also required for the development of dorsal axial structures and left-right symmetry.

Specification

Aliases : Forkhead box protein H1, Forkhead activin signal transducer 1, Fast-1, Schmalspur protein, foxh1, fast1, sur

Entrez GeneID : 57930

Swissprot : Q9I9E1

WB Predicted band size : 51.6kDa

Host/Isotype : Rabbit IgG

Storage : Store at 4°C short term. Aliquot and store at -20°C long term. Avoid freeze/thaw cycles.

Species Reactivity : zebrafish

Immunogen : This DANRE foxh1 antibody is generated from rabbits immunized with a KLH conjugated synthetic peptide between 313-334 amino acids from the Central region of DANRE foxh1.

Formulation : Purified polyclonal antibody supplied in PBS with 0.05% sodium azide. This antibody is purified through a protein A column, followed by peptide affinity purification.

Application

WB	1/1000
----	--------

Call 1-510-860-4615
+86-19375157864
Email Info@ProMab.com
Web www.ProMab.com
www.ProMab.cn

Protocol

WB - www.promab.com/protocol/wb.html
IHC - www.promab.com/protocol/ihc.html
ICC - www.promab.com/protocol/icc.html
HCM - www.promab.com/protocol/hcm.html

Antigen Sequence is available upon request.

Products and Services

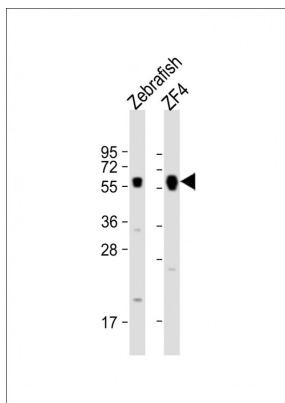
- Mouse Monoclonal Antibody
- Rat Monoclonal Antibody
- Human Antibody
- Hybridoma Sequencing
- Polyclonal Antibody

For Research Only

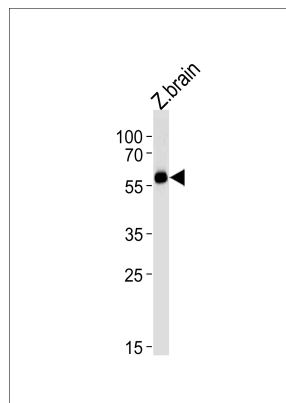
Application Key:WB - Western Blot | IHC - Immunohistochemistry | ICC - Immunocytochemistry | FCM - Flow Cytometry | ELISA - Enzyme-linked Immunosorbent Assay | IP - Immunoprecipitation

#P34231

Rabbit Polyclonal Antibody to DANRE foxh1



All lanes : Anti-(DANRE) foxh1 Antibody (Center) at 1:1000 dilution Lane 1: Zebrafish lysate Lane 2: ZF4 whole cell lysate Lysates/proteins at 20 µg per lane. Secondary Goat Anti-Rabbit IgG, (H+L), Peroxidase conjugated at 1/10000 dilution. Predicted band size : 52 kDa Blocking/Dilution buffer: 5% NFDM/TBST.



DANRE foxh1 Antibody (Center) (Cat. #P34231) western blot analysis in zebra fish brain tissue lysates (35ug/lane). This demonstrates the DANRE foxh1 antibody detected the DANRE foxh1 protein (arrow).

For Research Only

Application Key: WB - Western Blot | IHC - Immunohistochemistry | ICC - Immunocytochemistry | FCM - Flow Cytometry | ELISA - Enzyme-linked Immunosorbent Assay | IP - Immunoprecipitation

#P34231