

Rabbit Polyclonal Antibody to ACTB

Order Information

Catalog#	P00001	
Size/Concentration	100µl	50µl
Price(¥)	1980	1180

Description

This gene encodes one of six different actin proteins. Actins are highly conserved proteins that are involved in cell motility, structure, integrity, and intercellular signaling. The encoded protein is a major constituent of the contractile apparatus and one of the two nonmuscle cytoskeletal actins that are ubiquitously expressed. Mutations in this gene cause Baraitser-Winter syndrome 1, which is characterized by intellectual disability with a distinctive facial appearance in human patients. Numerous pseudogenes of this gene have been identified throughout the human genome.

Specification

Aliases : BRWS1; PS1TP5BP1

Swissprot : P60709

WB Predicted band size : 42 kDa

Host/Isotype : Rabbit IgG

Storage : Store at 4°C short term. Aliquot and store at -20°C long term. Avoid freeze/thaw cycles.

Species Reactivity : Human, Mouse, Rat

Immunogen : Synthetic peptide of human ACTB

Formulation : pH7.4 PBS, 0.05% NaN₃, 40% Glycerol

Application

WB	1/1000-1/5000
IHC	1/50-1/100
ELISA	1/5000-1/10000

Call 1-510-860-4615

+86-19375157864

Email Info@ProMab.com

Web www.ProMab.com

www.ProMab.cn

Protocol

WB - www.promab.com/protocol/wb.html

IHC - www.promab.com/protocol/ihc.html

ICC - www.promab.com/protocol/icc.html

HCM - www.promab.com/protocol/hcm.html

Antigen Sequence is available upon request.

Products and Services

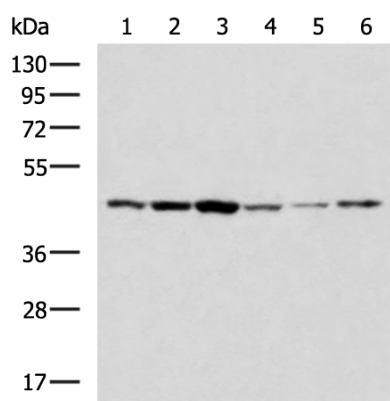
- Mouse Monoclonal Antibody
- Rat Monoclonal Antibody
- Human Antibody
- Hybridoma Sequencing
- Polyclonal Antibody

For Research Only

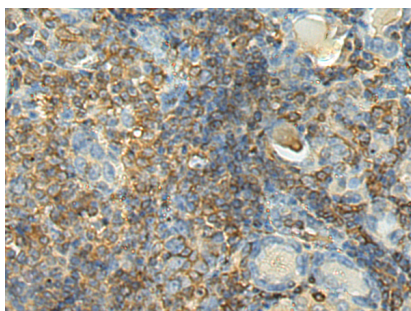
Application Key: WB - Western Blot | IHC - Immunohistochemistry | ICC - Immunocytochemistry | FCM - Flow Cytometry | ELISA - Enzyme-linked Immunosorbent Assay | IP - Immunoprecipitation

#P00001

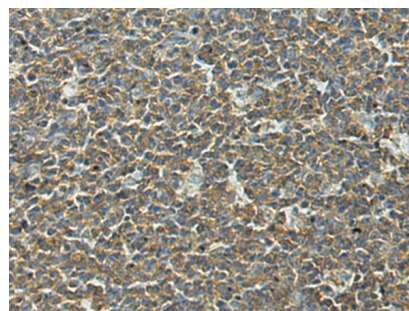
Rabbit Polyclonal Antibody to ACTB



Gel: 8%SDS-PAGE, Lysate: 40 µg, Lane 1-6: Mouse kidney tissue, Mouse brain tissue, 231, HeLa, 293T and HepG2 cell lysates , Primary antibody: P00001(ACTB Antibody) at dilution 1/1600, Secondary antibody: Goat anti rabbit IgG at 1/5000 dilution, Exposure time: 2 minutes



The image is immunohistochemistry of paraffin-embedded Human thyroid cancer tissue using P00001(ACTB Antibody) at dilution 1/50. (Original magnification: ×200)



The image is immunohistochemistry of paraffin-embedded Human tonsil tissue using P00001(ACTB Antibody) at dilution 1/50. (Original magnification: ×200)

For Research Only

Application Key: WB - Western Blot | IHC - Immunohistochemistry | ICC - Immunocytochemistry | FCM - Flow Cytometry | ELISA - Enzyme-linked Immunosorbent Assay | IP - Immunoprecipitation

#P00001