

# Mouse Monoclonal Antibody to IL1A

## Order Information

|                    |       |      |
|--------------------|-------|------|
| Catalog#           | 90003 |      |
| Size/Concentration | 100µl | 50µl |
| Price(¥)           | 2180  | 1280 |

## Description

The protein encoded by this gene is a member of the interleukin 1 cytokine family. This cytokine is a pleiotropic cytokine involved in various immune responses, inflammatory processes, and hematopoiesis. This cytokine is produced by monocytes and macrophages as a proprotein, which is proteolytically processed and released in response to cell injury, and thus induces apoptosis. This gene and eight other interleukin 1 family genes form a cytokine gene cluster on chromosome 2. It has been suggested that the polymorphism of these genes is associated with rheumatoid arthritis and Alzheimer's disease.

## Specification

Aliases : IL1; IL-1A; IL1F1; IL1-ALPHA; IL-1 alpha

Entrez GeneID : 3552

clone : 6G4A5

WB Predicted band size : 30.6kDa

Host/Isotype : Mouse IgG1

Storage : Store at 4°C short term. Aliquot and store at -20°C long term. Avoid freeze/thaw cycles.

Species Reactivity : Human

Immunogen : Purified recombinant fragment of human IL1A (AA: extra(155-354)) expressed in E. Coli.

Formulation : Purified antibody in PBS with 0.05% sodium azide

## Application

|       |               |
|-------|---------------|
| FCM   | 1/200 - 1/400 |
| ELISA | 1/10000       |

## References

1,Noise Health. Mar-Apr 2019;21(99):77-82.

2,Crit Care. 2020 Jul 18;24(1):445.

Call 1-510-860-4615

+86-19375157864

Email [Info@ProMab.com](mailto:Info@ProMab.com)

Web [www.ProMab.com](http://www.ProMab.com)

[www.ProMab.cn](http://www.ProMab.cn)

## Protocol

WB - [www.promab.com/protocol/wb.html](http://www.promab.com/protocol/wb.html)

IHC - [www.promab.com/protocol/ihc.html](http://www.promab.com/protocol/ihc.html)

ICC - [www.promab.com/protocol/icc.html](http://www.promab.com/protocol/icc.html)

HCM - [www.promab.com/protocol/hcm.html](http://www.promab.com/protocol/hcm.html)

**Antigen Sequence** is available upon request.

## Products and Services

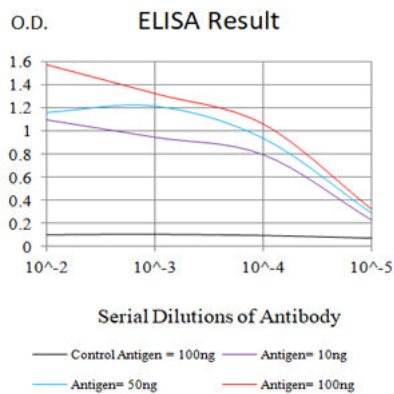
- Mouse Monoclonal Antibody
- Rat Monoclonal Antibody
- Human Antibody
- Hybridoma Sequencing
- Polyclonal Antibody

**For Research Only**

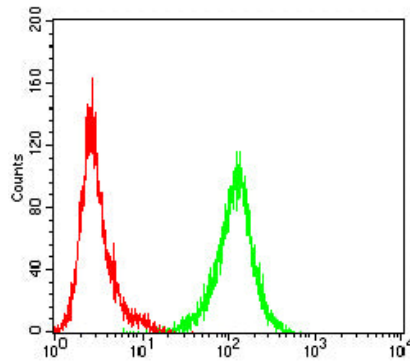
**Application Key:**WB - Western Blot | IHC - Immunohistochemistry | ICC - Immunocytochemistry | FCM - Flow Cytometry | ELISA - Enzyme-linked Immunosorbent Assay | IP - Immunoprecipitation

# #90003

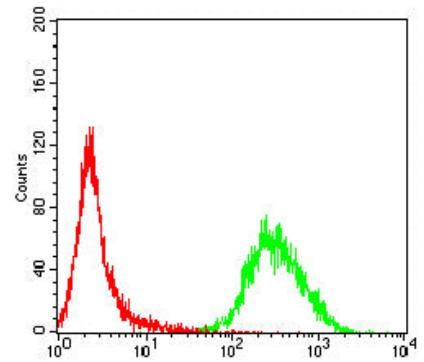
# Mouse Monoclonal Antibody to IL1A



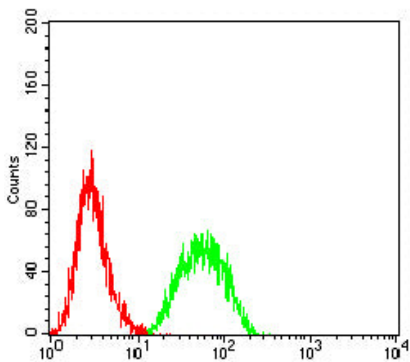
Black line: Control Antigen (100 ng); Purple line: Antigen (10ng); Blue line: Antigen (50 ng); Red line: Antigen (100 ng)



Flow cytometric analysis of Jurkat cells using IL1A mouse mAb (green) and negative control (red).



Flow cytometric analysis of MOLT4 cells using IL1A mouse mAb (green) and negative control (red).



Flow cytometric analysis of THP-1 cells using IL1A mouse mAb (green) and negative control (red).

**For Research Only**

**Application Key:** WB - Western Blot | IHC - Immunohistochemistry | ICC - Immunocytochemistry | FCM - Flow Cytometry | ELISA - Enzyme-linked Immunosorbent Assay | IP - Immunoprecipitation

#90003