

Mouse Monoclonal Antibody to LDLR

Order Information

Catalog#	30767	
Size/Concentration	100µl	50µl
Price(¥)	2180	1280

Description

The low density lipoprotein receptor (LDLR) gene family consists of cell surface proteins involved in receptor-mediated endocytosis of specific ligands. Low density lipoprotein (LDL) is normally bound at the cell membrane and taken into the cell ending up in lysosomes where the protein is degraded and the cholesterol is made available for repression of microsomal enzyme 3-hydroxy-3-methylglutaryl coenzyme A (HMG CoA) reductase, the rate-limiting step in cholesterol synthesis. At the same time, a reciprocal stimulation of cholesterol ester synthesis takes place. Mutations in this gene cause the autosomal dominant disorder, familial hypercholesterolemia. Alternate splicing results in multiple transcript variants.

Specification

Aliases : FH; FHC; LDLCQ2

Entrez GeneID : 3949

Swissprot : P01130

clone : 1B10H10

WB Predicted band size : 95.4kDa

Host/Isotype : Mouse IgG1

Storage : Store at 4°C short term. Aliquot and store at -20°C long term. Avoid freeze/thaw cycles.

Species Reactivity : Human

Immunogen : Purified recombinant fragment of human LDLR (AA: 22-150) expressed in E. Coli.

Formulation : Purified antibody in PBS with 0.05% sodium azide

Application

IHC	1/200 - 1/1000
FCM	1/200 - 1/400
ELISA	1/10000

References

Phytother Res. 2012 Nov;26(11):1688-94.

Biochim Biophys Acta. 2011 Jun;1811(6):397-408.

Call 1-510-860-4615

+86-19375157864

Email Info@ProMab.com

Web www.ProMab.com

www.ProMab.cn

Protocol

WB - www.promab.com/protocol/wb.html

IHC - www.promab.com/protocol/ihc.html

ICC - www.promab.com/protocol/icc.html

HCM - www.promab.com/protocol/hcm.html

Antigen Sequence is available upon request.

Products and Services

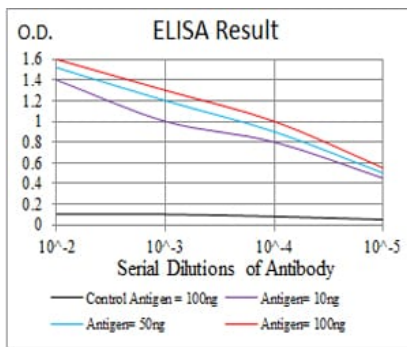
- Mouse Monoclonal Antibody
- Rat Monoclonal Antibody
- Human Antibody
- Hybridoma Sequencing
- Polyclonal Antibody

For Research Only

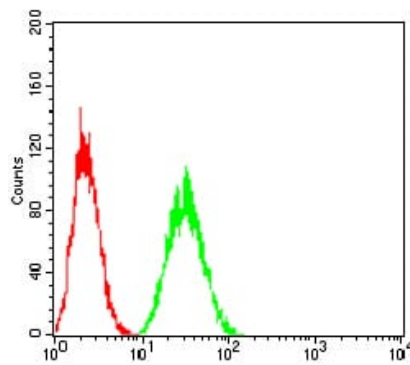
Application Key: WB - Western Blot | IHC - Immunohistochemistry | ICC - Immunocytochemistry | FCM - Flow Cytometry | ELISA - Enzyme-linked Immunosorbent Assay | IP - Immunoprecipitation

#30767

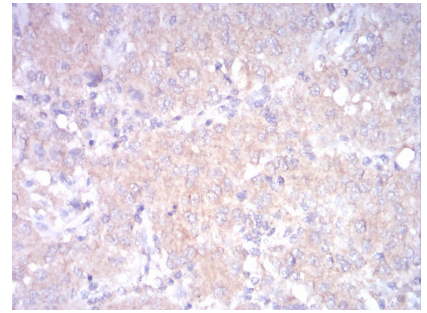
Mouse Monoclonal Antibody to LDLR



Black line: Control Antigen (100 ng); Purple line: Antigen(10ng); Blue line: Antigen (50 ng); Red line: Antigen (100 ng);



Flow cytometric analysis of HeLa cells using LDLR mouse mAb (green) and negative control (red).



Immunohistochemical analysis of paraffin-embedded human ovarian cancer tissues using LDLR mouse mAb with DAB staining.

For Research Only

Application Key: WB - Western Blot | IHC - Immunohistochemistry | ICC - Immunocytochemistry | FCM - Flow Cytometry | ELISA - Enzyme-linked Immunosorbent Assay | IP - Immunoprecipitation

#30767