

# Mouse Monoclonal Antibody to BRCA1

## Order Information

Catalog#	30509	
Size/Concentration	100µl	50µl
Price(¥)	2180	1280

## Description

This gene encodes a nuclear phosphoprotein that plays a role in maintaining genomic stability, and it also acts as a tumor suppressor. The encoded protein combines with other tumor suppressors, DNA damage sensors, and signal transducers to form a large multi-subunit protein complex known as the BRCA1-associated genome surveillance complex (BASC). This gene product associates with RNA polymerase II, and through the C-terminal domain, also interacts with histone deacetylase complexes. This protein thus plays a role in transcription, DNA repair of double-stranded breaks, and recombination. Mutations in this gene are responsible for approximately 40% of inherited breast cancers and more than 80% of inherited breast and ovarian cancers. Alternative splicing plays a role in modulating the subcellular localization and physiological function of this gene. Many alternatively spliced transcript variants, some of which are disease-associated mutations, have been described for this gene, but the full-length natures of only some of these variants has been described. A related pseudogene, which is also located on chromosome 17, has been identified.

## Specification

Aliases : IRIS; PSCP; BRCAI; BRCC1; PNCA4; RNF53; BROVCA1; PPP1R53

Entrez GeneID : 672

Swissprot : P38398

clone : 6C6D2

WB Predicted band size : 207.7kDa

Host/Isotype : Mouse IgG1

Storage : Store at 4°C short term. Aliquot and store at -20°C long term. Avoid freeze/thaw cycles.

Species Reactivity : Human

Immunogen : Purified recombinant fragment of human BRCA1 (AA: 229-335) expressed in E. Coli.

Formulation : Purified antibody in PBS with 0.05% sodium azide

## Application

IHC	1/200 - 1/1000
ELISA	1/10000

## References

1. Cancer Res. 2013 Jan 15;73(2):706-15.
2. J Biol Chem. 2012 Nov 23;287(48):40618-28.

Call 1-510-860-4615

+86-19375157864

Email [Info@ProMab.com](mailto:Info@ProMab.com)

Web [www.ProMab.com](http://www.ProMab.com)

[www.ProMab.cn](http://www.ProMab.cn)

## Protocol

WB - [www.promab.com/protocol/wb.html](http://www.promab.com/protocol/wb.html)






IHC - [www.promab.com/protocol/ihc.html](http://www.promab.com/protocol/ihc.html)

ICC - [www.promab.com/protocol/icc.html](http://www.promab.com/protocol/icc.html)

HCM - [www.promab.com/protocol/hcm.html](http://www.promab.com/protocol/hcm.html)

**Antigen Sequence** is available upon request.

## Products and Services

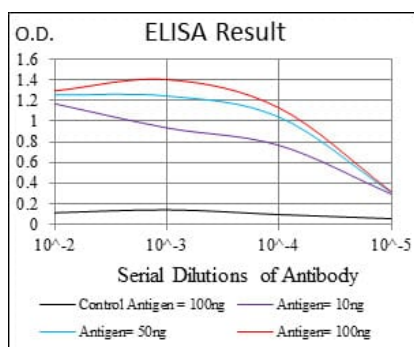
-  Mouse Monoclonal Antibody
-  Rat Monoclonal Antibody
-  Human Antibody
-  Hybridoma Sequencing
-  Polyclonal Antibody

**For Research Only**

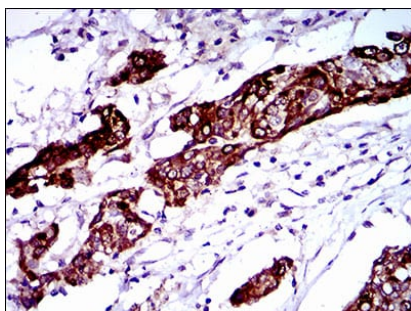
**Application Key:** WB - Western Blot | IHC - Immunohistochemistry | ICC - Immunocytochemistry | FCM - Flow Cytometry | ELISA - Enzyme-linked Immunosorbent Assay | IP - Immunoprecipitation

# #30509

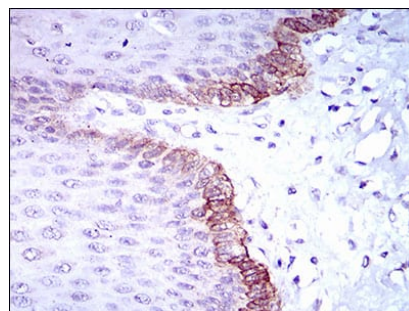
# Mouse Monoclonal Antibody to BRCA1



Black line: Control Antigen (100 ng); Purple line: Antigen(10ng); Blue line: Antigen (50 ng); Red line: Antigen (100 ng);



Immunohistochemical analysis of paraffin-embedded human esophagus cancer tissues using BRCA1 mouse mAb with DAB staining.



Immunohistochemical analysis of paraffin-embedded human esophagus tissues using BRCA1 mouse mAb with DAB staining.

**For Research Only**

**Application Key:** WB - Western Blot | IHC - Immunohistochemistry | ICC - Immunocytochemistry | FCM - Flow Cytometry | ELISA - Enzyme-linked Immunosorbent Assay | IP - Immunoprecipitation

#30509