

Mouse Monoclonal Antibody to CHD3

Order Information

Catalog#	20422	
Size/Concentration	100µl	50µl
Price(¥)	2180	1280

Description

This gene encodes a member of the CHD family of proteins which are characterized by the presence of chromo (chromatin organization modifier) domains and SNF2-related helicase/ATPase domains. This protein is one of the components of a histone deacetylase complex referred to as the Mi-2/NuRD complex which participates in the remodeling of chromatin by deacetylating histones. Chromatin remodeling is essential for many processes including transcription. Autoantibodies against this protein are found in a subset of patients with dermatomyositis. Three alternatively spliced transcripts encoding different isoforms have been described.

Specification

Aliases : ZFH; Mi-2a; Mi2-ALPHA; CHD3

Entrez GeneID : 1107

Swissprot : Q12873

clone : 2G4

WB Predicted band size : 226kDa

Host/Isotype : Mouse IgG1

Storage : Store at 4°C short term. Aliquot and store at -20°C long term. Avoid freeze/thaw cycles.

Species Reactivity : Human, Mouse

Immunogen : Purified recombinant fragment of human CHD3 expressed in E. Coli.

Formulation : Purified antibody in PBS with 0.05% sodium azide.

Application

WB	1/500 - 1/2000
IHC	1/200 - 1/1000
ICC	1/200 - 1/1000
FCM	1/200 - 1/400
ELISA	1/10000

References

1. Virus Res. 2003 Dec;98(1):83-91.
2. Mol Cell. 2004 Sep 24;15(6):853-65.
3. J Biol Chem. 2008 Dec 12;283(50):34976-82.

Call 1-510-860-4615

+86-19375157864

Email Info@ProMab.com

Web www.ProMab.com

www.ProMab.cn

Protocol

WB - www.promab.com/protocol/wb.html

IHC - www.promab.com/protocol/ihc.html

ICC - www.promab.com/protocol/icc.html

HCM - www.promab.com/protocol/hcm.html

Antigen Sequence is available upon request.

Products and Services

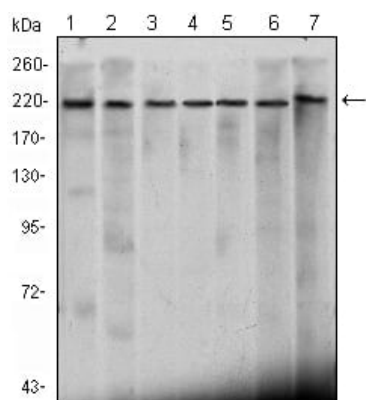
- Mouse Monoclonal Antibody
- Rat Monoclonal Antibody
- Human Antibody
- Hybridoma Sequencing
- Polyclonal Antibody

For Research Only

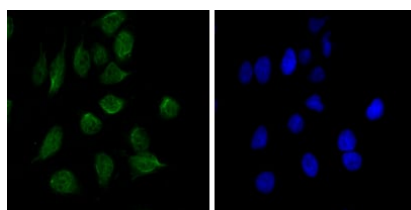
Application Key: WB - Western Blot | IHC - Immunohistochemistry | ICC - Immunocytochemistry | FCM - Flow Cytometry | ELISA - Enzyme-linked Immunosorbent Assay | IP - Immunoprecipitation

#20422

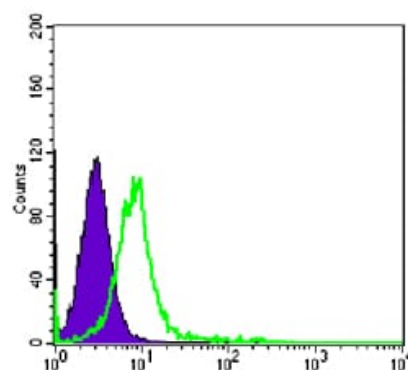
Mouse Monoclonal Antibody to CHD3



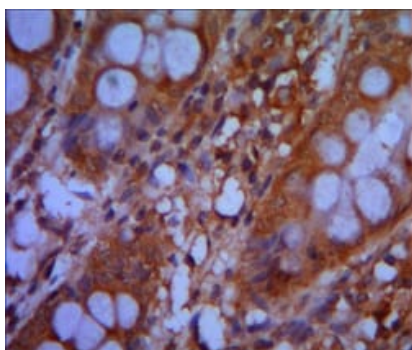
Western blot analysis using CHD3 mouse mAb against Hela (1), K562 (2), Jurkat (3), NTERA-2 (4), HEK293 (5), Raji (6) cell lysate and mouse brain (7) tissue lysate.



Immunofluorescence analysis of Hela cells using CHD3 mouse mAb (green). Blue: DRAQ5 fluorescent DNA dye.



Flow cytometric analysis of K562 cells using CHD3 mouse mAb (green) and negative control (purple).



Immunohistochemical analysis of paraffin-embedded human colon cancer tissues using CHD3 mouse mAb with DAB staining.

For Research Only

Application Key: WB - Western Blot | IHC - Immunohistochemistry | ICC - Immunocytochemistry | FCM - Flow Cytometry | ELISA - Enzyme-linked Immunosorbent Assay | IP - Immunoprecipitation

#20422