

Mouse Monoclonal Antibody to BNP

Order Information

Catalog#	20158	
Size/Concentration	100µl	50µl
Price(¥)	2180	1280

Description

BNP (brain natriuretic peptide) belongs to a family of structurally similar peptide hormones, which includes atrial natriuretic peptide (ANP), BNP, C-type natriuretic peptide (CNP) and urodilatin. ANP and BNP act mainly as cardiac hormones, produced primarily by the atrium and ventricle, respectively, while the gene encoding C-type natriuretic peptide is expressed mainly in the brain. BNP circulates in blood as a peptide hormone with natriuretic, vasodilatory and renin inhibitory properties. It is secreted predominantly by the left ventricular myocytes in response to volume expansion and pressure overload. These peptides are characterized by a common 17 amino acid ring structure with a disulfide bond between two cysteine residues. This ring structure shows high homology between different natriuretic.

Specification

Aliases : BNP; NPPB

Entrez GeneID : 4879

Swissprot : P16860

clone : 3A6F7C7

Host/Isotype : Mouse IgG1

Storage : Store at 4°C short term. Aliquot and store at -20°C long term. Avoid freeze/thaw cycles.

Species Reactivity : Human

Immunogen : Synthetic peptide corresponding to aa (Glu-Pro-Leu-Gln-Glu-Ser-Pro-Arg-Pro-Thr-Gly-Val-Trp-Cys) of human BNP, conjugated to KLH.

Formulation : Ascitic fluid containing 0.03% sodium azide.

Application

IHC	1/200 - 1/1000
ELISA	1/10000

References

1. Dawson A. Struthers AD. Expert Opin Biol Ther. 2003, Feb, 3(1):107-12. Review.
2. Pfister R. Erdmann E. Schneider CA. Dtsch Med Wochenschr. 2003, May 2, 128(18):1007-12.

Call 1-510-860-4615

+86-19375157864

Email Info@ProMab.com

Web www.ProMab.com

www.ProMab.cn

Protocol

WB - www.promab.com/protocol/wb.html

IHC - www.promab.com/protocol/ihc.html

ICC - www.promab.com/protocol/icc.html

HCM - www.promab.com/protocol/hcm.html

Antigen Sequence is available upon request.

Products and Services

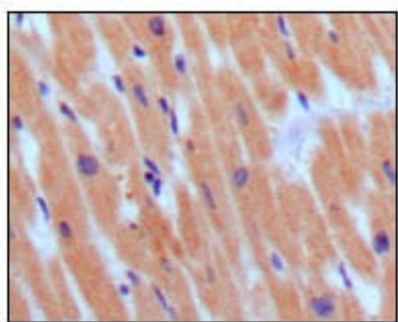
- Mouse Monoclonal Antibody
- Rat Monoclonal Antibody
- Human Antibody
- Hybridoma Sequencing
- Polyclonal Antibody

For Research Only

Application Key: WB - Western Blot | IHC - Immunohistochemistry | ICC - Immunocytochemistry | FCM - Flow Cytometry | ELISA - Enzyme-linked Immunosorbent Assay | IP - Immunoprecipitation

#20158

Mouse Monoclonal Antibody to BNP



Immunohistochemical analysis of paraffin-embedded human normal myocardium, showing cytoplasmic localization using BNP3 mouse mAb with DAB staining.

For Research Only

Application Key: WB - Western Blot | IHC - Immunohistochemistry | ICC - Immunocytochemistry | FCM - Flow Cytometry | ELISA - Enzyme-linked Immunosorbent Assay | IP - Immunoprecipitation

#20158