

Mouse Monoclonal Antibody to BCL-10

Order Information

Catalog#	20003	
Size/Concentration	100µl	50µl
Price(¥)	2180	1280

Description

Bcl-10 (B-cell CLL/lymphoma 10), also known as CLAP, Me10, CIPER, c-E10, CARMEN. Entrez Protein NP_003912. It is a protein containing a caspase recruitment domain (CARD). It plays an important role in apoptosis and activating NF-kappaB. The research suggested that it interacted with other CARD domain containing proteins including CARD9, 10, 11 and 14, which were thought to function as upstream regulators in NF-kappaB signaling. Bcl-10 is found to form a complex with MALT1 which encoded by another gene known to be translocated in MALT lymphoma. MALT1 and Bcl-10 are thought to synergize in the activation of NF-kappaB, and the deregulation of either of them may contribute to the same pathogenetic process that leads to the malignancy.

Specification

Aliases : CLAP; Me10; CIPER; c-E10; CARMEN
Entrez GeneID : 8915
Swissprot : O95999
clone : 4F8
WB Predicted band size : 26kDa
Host/Isotype : Mouse IgG1
Storage : Store at 4°C short term. Aliquot and store at -20°C long term. Avoid freeze/thaw cycles.
Species Reactivity : Human, Mouse
Immunogen : Purified recombinant fragment of human BCL-10 expressed in E. Coli.
Formulation : Ascitic fluid containing 0.03% sodium azide.

Application

WB	1/500 - 1/2000
IHC	1/200 - 1/1000
ICC	1/200 - 1/1000
FCM	1/200 - 1/400
ELISA	1/10000

References

1. Willis, T.G., et al. (1999) Cell. 96, 35-45.
2. Lucas, P.C., et al. (2001) J. Biol.Chem. 276, 19012-19019.
3. Wang, L., et al. (2001) J. Biol.Chem. 276, 21405-21409

Call 1-510-860-4615
+86-19375157864
Email Info@ProMab.com
Web www.ProMab.com
www.ProMab.cn

Protocol

WB - www.promab.com/protocol/wb.html
IHC - www.promab.com/protocol/ihc.html
ICC - www.promab.com/protocol/icc.html
HCM - www.promab.com/protocol/hcm.html

Antigen Sequence is available upon request.

Products and Services

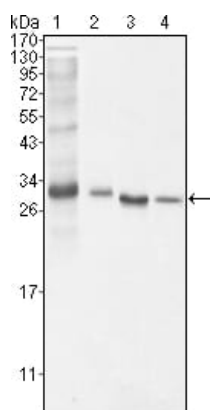
- Mouse Monoclonal Antibody
- Rat Monoclonal Antibody
- Human Antibody
- Hybridoma Sequencing
- Polyclonal Antibody

For Research Only

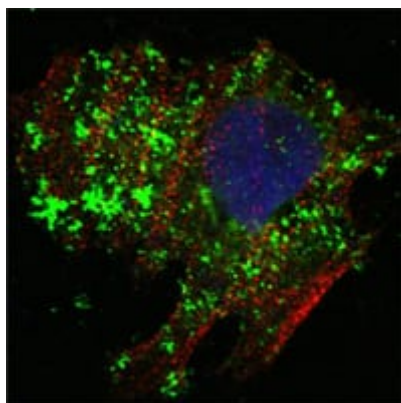
Application Key: WB - Western Blot | IHC - Immunohistochemistry | ICC - Immunocytochemistry | FCM - Flow Cytometry | ELISA - Enzyme-linked Immunosorbent Assay | IP - Immunoprecipitation

#20003

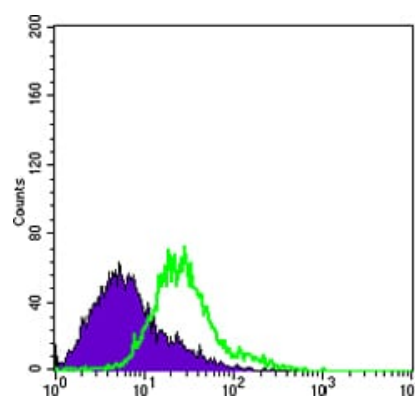
Mouse Monoclonal Antibody to BCL-10



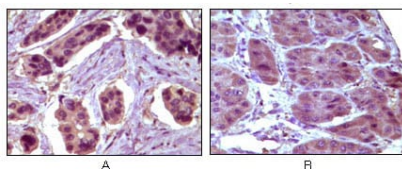
Western blot analysis using BCL10 mouse mAb against NIH/3T3 (1), HeLa (2), MCF-7 (3) and Jurkat (4) cell lysate.



Confocal Immunofluorescence analysis of HeLa cells using BCL10 mouse mAb (green). Red: Actin filaments have been labeled with Alexa Fluor-555 phalloidin. Blue: DRAQ5 fluorescent DNA dye.



Flow cytometric analysis of HeLa cells using BCL10 mouse mAb (green) and negative control (purple).



Immunohistochemical analysis of paraffin-embedded human breast carcinoma (A) and liver carcinoma (B), showing cytoplasmic localization using BCL10 mouse mAb with DAB staining.

For Research Only

Application Key: WB - Western Blot | IHC - Immunohistochemistry | ICC - Immunocytochemistry | FCM - Flow Cytometry | ELISA - Enzyme-linked Immunosorbent Assay | IP - Immunoprecipitation

#20003